

St Albans Office
10 High Street, St Albans
Herts AL3 4EL
01727 228428
stalbans@cassidyandtate.co.uk

Marshalswick Office
59 The Quadrant, St Albans,
Herts AL4 9RD
01727 832383
marshalswick@cassidyandtate.co.uk

Wheathampstead Office
39 High Street, Wheathampstead,
Herts AL4 8BB
01582 831200
wheathampstead@cassidyandtate.co.uk

Cassidy
& Tate
Your Local Experts



Award Winning Agency



www.cassidyandtate.co.uk

SQUIRRELS
LEVERSTOCK GREEN
HP2 4NA

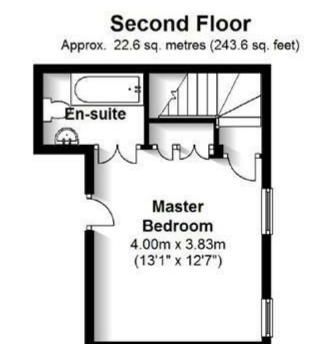
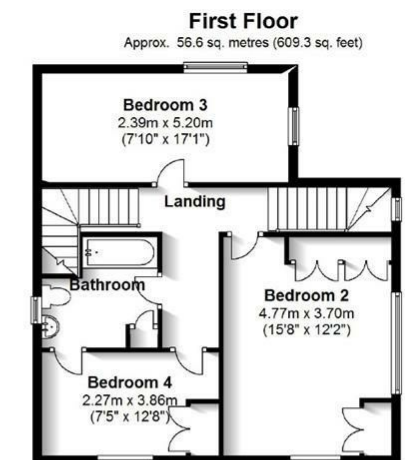
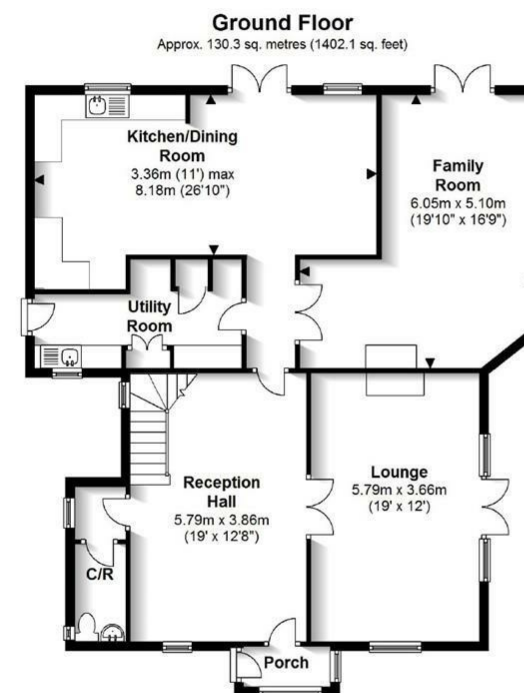
Offers In Excess Of £800,000

EPC Rating: G Council Tax Band:



All The Ingredients Needed For A Fabulous Lifestyle

Boasting a true flavour of idyllic country living, this stunning four bedroom detached property features a wealth of charm including exposed beams and character 'cottage' fire places. Arranged over three levels, this beautiful family home features a reception lobby, two reception rooms, a modern fitted kitchen/diner, utility room, cloakroom, en suite to master bedroom, two garages, ample parking, carriage driveway and unspoilt views over open countryside from the mature garden. The property is situated within only a short distance away from St. Albans City Centre plus links to the M25 and M1.



Total area: approx. 209.5 sq. metres (2255.1 sq. feet)
Sketch layout only. This plan is not drawn to scale and is for identification purposes only.
Plan produced using The Mobile Agent.



Cassidy & Tate have taken all reasonable steps to ensure the accuracy of the details supplied in our marketing material however, details are provided as a guide only and we advise prospective purchasers to confirm details upon inspection of the property. Cassidy & Tate will not be held liable for any costs which are incurred as a result of discrepancies.

Perfect Fusion of Location And Way of Living



Why Cassidy & Tate

Cassidy & Tate are a fully independent estate agent who have developed unparalleled understanding on how people want to buy, sell and rent property within the residential property market in Hertfordshire and its surrounding areas. We are able to accommodate your individual requirements and deliver to you a more personalised service, tailored to your home buying, selling and letting needs.

We also have many years of experience in land and new homes and the pleasure of working alongside many reputable house builders and developers in Home Counties and Greater London. Whether you are looking to acquire or sell development opportunities and land, wish to purchase or sell a newly built or refurbished property, or require a site valuation and marketing advice we can help.

Your Local Property Experts

As one of St. Albans leading estate agents we work relentlessly to ensure our valued customers receive the exceptional service they deserve at all times. We epitomise not only professional estate agency knowledge, but a dedication to integrity and responsiveness to every client. The Cassidy & Tate team will be available to you when in need to help overcome any stressful situations that may arise. We are here to offer you valuable and honest advice when needed so that you can navigate the best path through the process. We know the marketplace, the buyers, the sellers and neighbourhoods, but most importantly we know how to put our clients' needs first. Our state of the art sales tools, modern technology and our own in-house fully independent Mortgage Broker is here to make your journey easier and more direct to your final goal. At Cassidy & Tate you will be in control of your sale or purchase and we will help you get the best result possible



Specialists in Bespoke Properties

- Master Bedroom En-Suite
- Split Over Three Levels
- Large Mature Gardens
- Overlooking Countryside
- Large Kitchen / Dining Room
- Carriage Driveway
- Two Garages
- Chain Free

Energy Efficiency Rating	Current	Potential
Very energy efficient - lower running costs		
(92 plus) A		
(81-91) B		
(69-80) C		
(55-68) D		
(39-54) E		
(21-38) F		
(1-20) G	1	1
Not energy efficient - higher running costs		
England & Wales		
	EU Directive 2002/91/EC	



